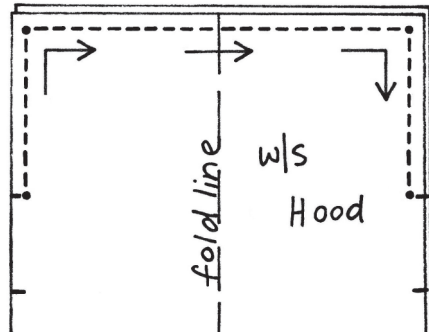
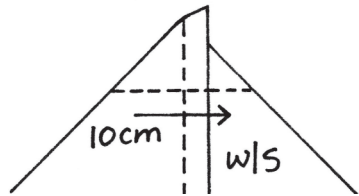


If the hood is **C** (folded) it will look like this:

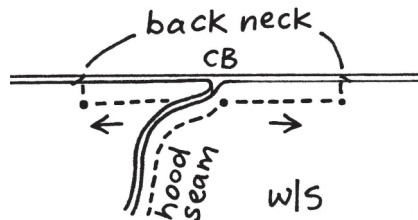


2. Open out the point/s and stitch a 10cm/4" long seam across it.



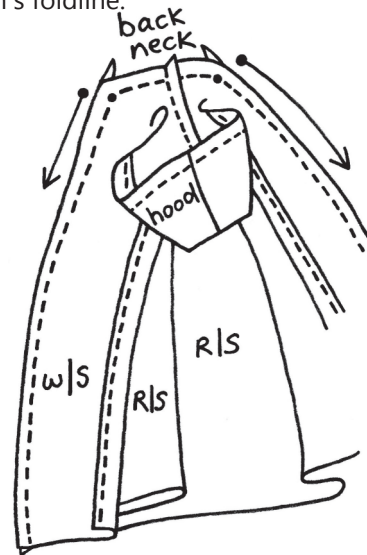
3. Sew the modular jacket Step 1.

4. Position the hood's back neck centrally on the jacket's, and stitch in two stages, from the centre out to the notch. For double layered hoods, just sew the outer layer.

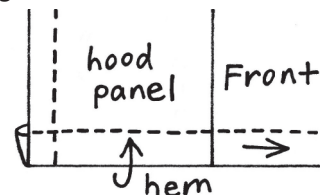


5. Pin then sew the rest of the hood onto the fronts. For **double**

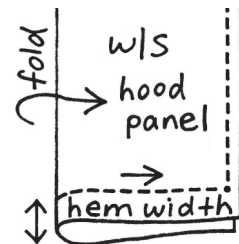
layer hoods, stop sewing at the hem's foldline.



6. For **single layer hoods**, hem or bind the opening edge and turn up a regular hem at the bottom.



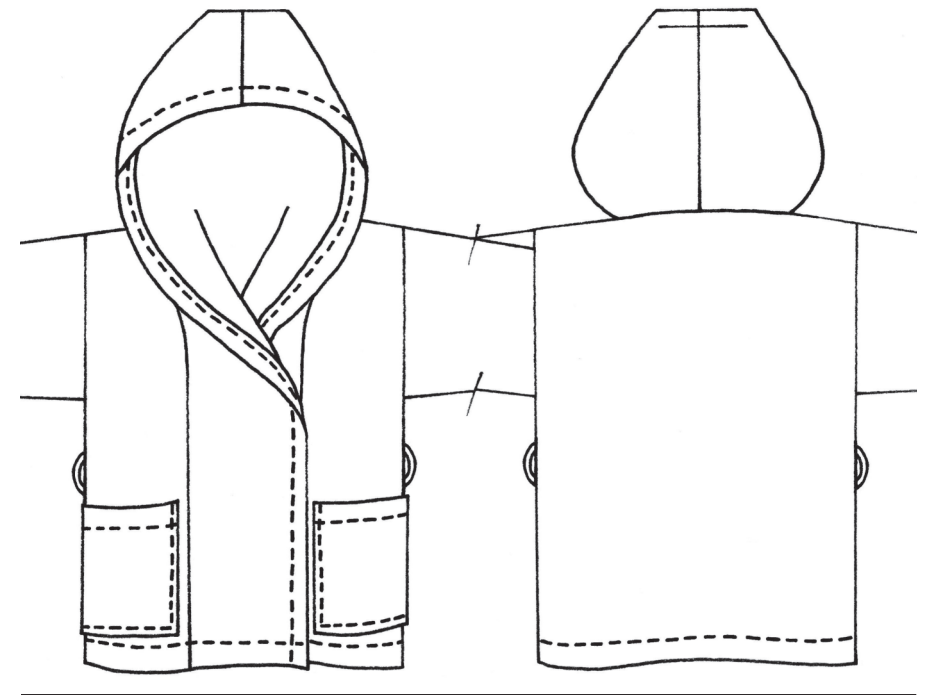
For **double layer hoods**, "bag out" the lower edge. Hem the rest of the jacket.



Press under 1.5cm/5/8" on the long edge of the inner hood and (hand) sew it to cover the seams sewn in the previous two steps.

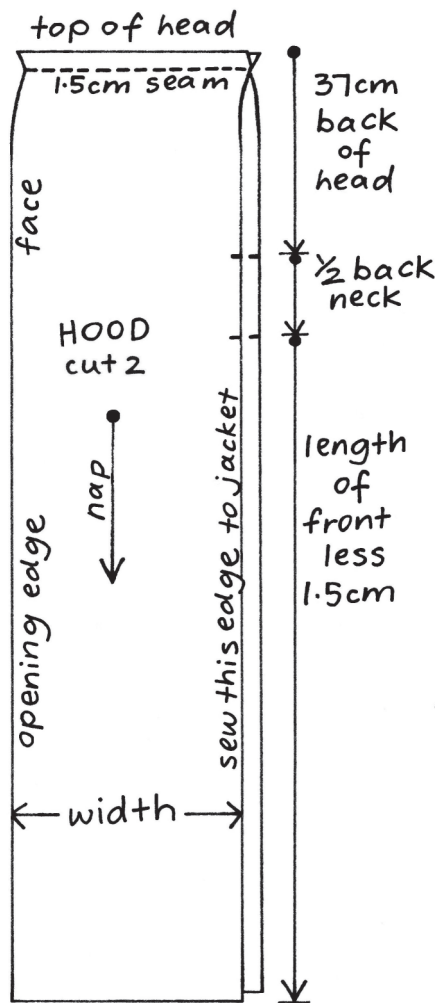
Modular Jacket Hooded Version

The modular jacket pattern can easily be converted to a hooded jacket. The hood can be lined, double fabric, or a single layer. The jacket can be fastened with a tie belt, buttons and buttonholes, or toggles and loops. Make a long hooded version to use as a dressing gown or after swimming. Watch a sew-a-long: <https://www.youtube.com/watch?v=8jdFiX5GPs>



To cut

1. Cut the modular jacket's back, fronts, sleeves and pockets. **DON'T** cut the 4 x front panels or the collar - you won't need them. Cut a belt and beltloops if required.



2. Cut two long strips for the hood. Note the grainline direction if your fabric is napped. The two pieces are seamed at the top of the hood, but if you don't want a seam there and your fabric will allow it, you can cut it in one long length - just omit the 1.5cm/ $\frac{5}{8}$ " seam allowance.

The **length** of each piece is:

Back of head 37cm/14 $\frac{1}{2}$ ", all sizes
+

Half back neck

Size A: 6.3cm/2 $\frac{1}{2}$ "

Size B: 6.6cm/2 $\frac{5}{8}$ "

Size C: 6.9cm/2 $\frac{3}{4}$ "

Size D: 7.3cm/2 $\frac{7}{8}$ "

Size E: 7.6cm/3"

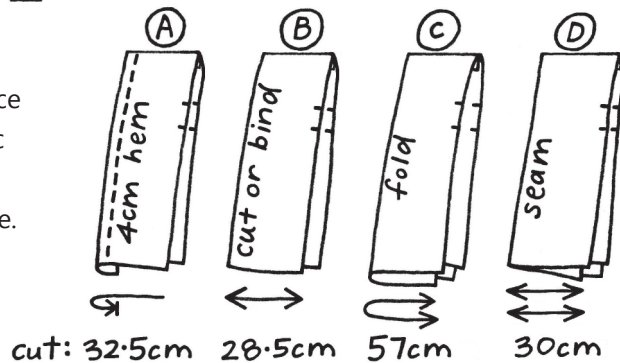
Sizes F+: 7.9cm/3 $\frac{1}{8}$ "

+

Length of the front less 1.5cm/ $\frac{5}{8}$ ", all sizes.

Make sure you snip the notches as shown.

The **width** of each piece depends on your fabric and how you'd like to finish the opening edge.



Page ii

Options:

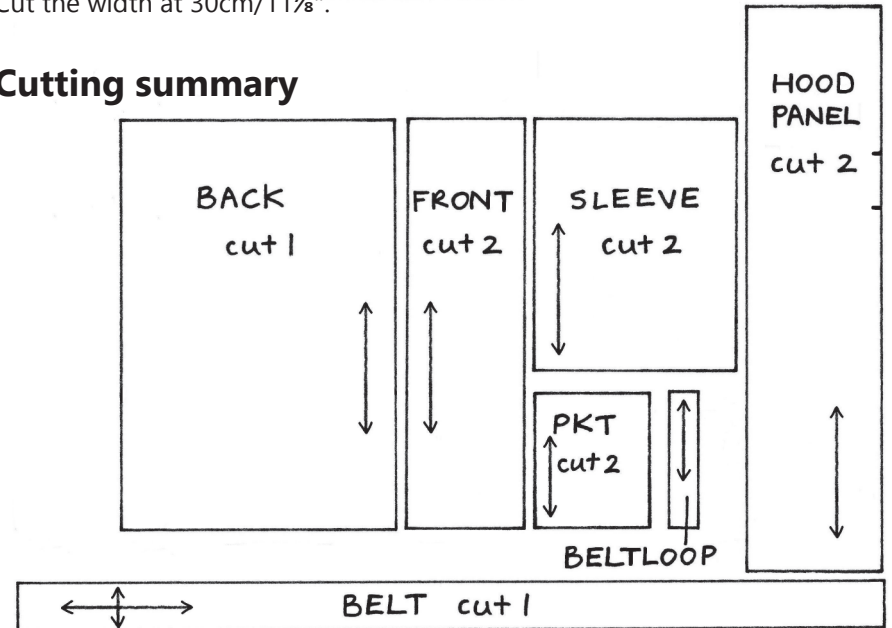
(A) - For a hemmed edge with a 4cm/1 $\frac{1}{2}$ " hem, cut the width at 32.5cm/12 $\frac{3}{4}$ ". Note the inside of the hem will be visible when the jacket is worn - this could be covered with bias binding for a neater finish.

(B) - A bound or raw edge is suitable for thick fabrics or boiled wool. Cut the width at 28.5cm/11 $\frac{1}{4}$ ".

(C) - If the fabric is lightweight, the hood panel can be cut double, giving you a fold for the opening edge. Cut the width at 57cm/22 $\frac{1}{2}$ ".

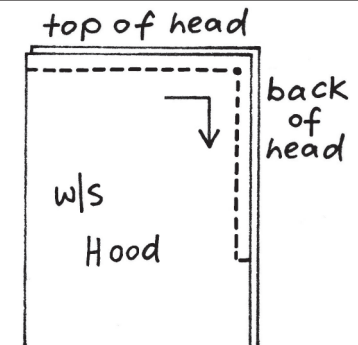
(D) - The hood can be lined, with a 1.5cm/ $\frac{5}{8}$ " seam on the opening edge. Cut the width at 30cm/11 $\frac{7}{8}$ ".

Cutting summary



To sew

1. Place the two hood pieces together and sew across the top of the head, pivot, and down the back of the head to the first notch.



Page iii