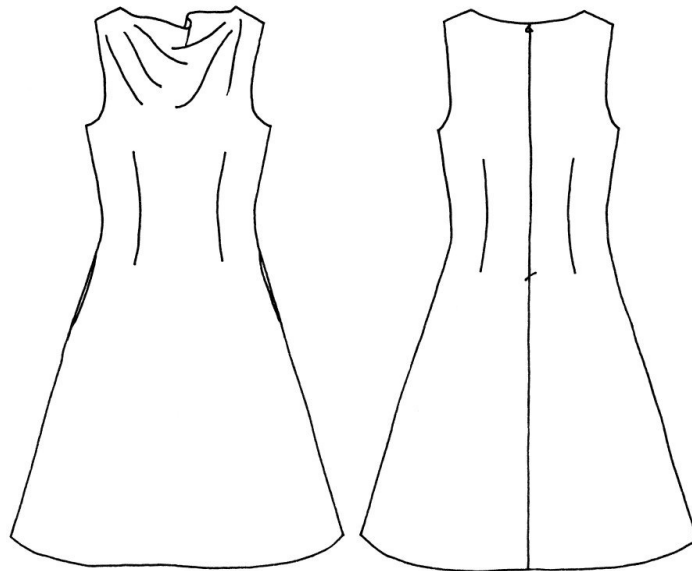


# Cowl Neck Dress in a Day

Make yourself an easy to wear cowl neck dress  
with optional in-seam pockets.



## You'll need to bring

- ✂ Fabric. Suitable fabrics are quilting cotton, baby cord or cotton drill.  
How much?  
115cm wide fabric (one way): 2.25m (ie twice the length)  
115cm wide fabric (two way): 1.75 for sizes 10-14, 2m for sizes 16-18  
150cm wide fabric (one-way): 2.25m (ie twice the length)  
150cm wide fabric (two-way): 1.2m + 20cm extra for pockets  
The *finished* dress is approximately 1m long from the shoulder.
- ✂ Zip. Either a 45cm regular (dress) zip or a 50cm invisible zip. Remember to bring the correct foot for your machine.
- ✂ Thread to match.
- ✂ Interfacing, 25cm, suitable for the weight of your fabric.
- ✂ Bias binding, 120cm, for facing the armholes.
- ✂ Sewing machine and sewing kit.

## You'll also need

- ✂ Pattern paper (eg a roll of greaseproof paper) for your pattern.
- ✂ Pen and paper if you want to take notes

## I supply

Patterns, instructions and finished garments to try on.